

Model: Finisher-E1

Ref. No. : FF-T01-W-000137-02

Date : July 12, 2001

REVISED

FF-T01-W-000137-01(February 20, 2001):
Addition of information / affected machine numbers, ③x3 on p. 3

© Canon (UK) Limited

Location: Processing Tray

Subject: To prevent 0081 jam due to the stack delivery belt overrunning

Reason: Due to loose tension of the stack delivery belt, the stack delivery lever of the stack delivery belt overruns the home position sensor (S8), which may cause the 0081 jam. We will advise you on the corrective measure.

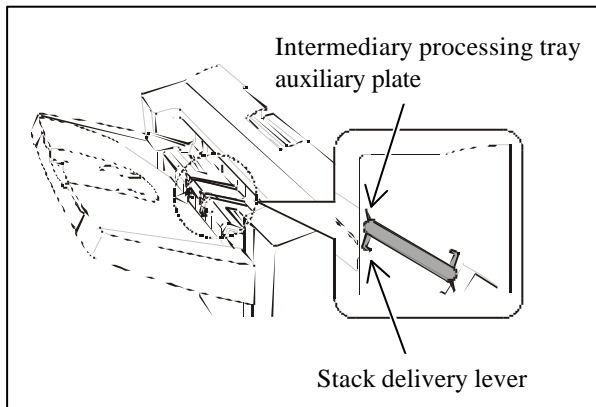
Details:

<Symptom>

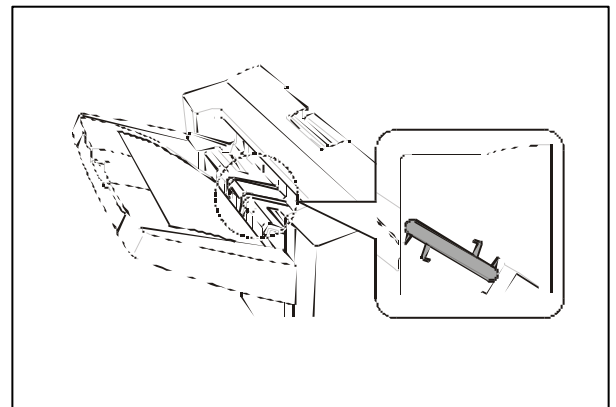
Stack Delivery Jam (Jam code 0081)

<Cause>

In some cases, the partially floating stack delivery belt may loose. As a result, the stack delivery lever of the stack delivery belt goes beyond the home position sensor (S8).



Correct stop position of stack delivery belt



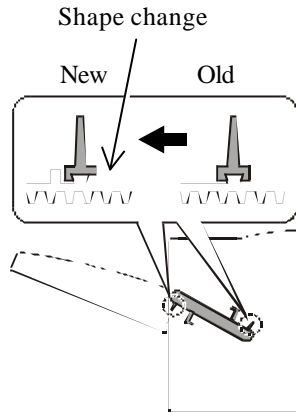
At 0081jam occurrence

<Factory Measure>

Temporary: Until a permanent measure is implemented, mount a new part, the leaf spring, on the stack delivery pulley shaft.

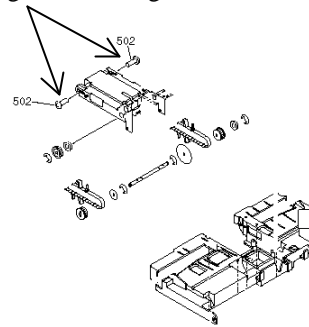
Permanent: The shape of the stack delivery belt is changed in an attempt to prevent the belt from floating. Along with it, a type of the tension tight screw for the stack delivery belt is changed from a binding screw to a binding screw with a washer.

How to judge the belt:
 As for the countermeasure stack delivery belt,
 the shape of the root of the intermediary
 processing tray auxiliary plate is changed.



Tension tight screws
 for the stack delivery belt (2 pcs.):
 They were changed from the binding screw
 to the binding screw with a flat washer

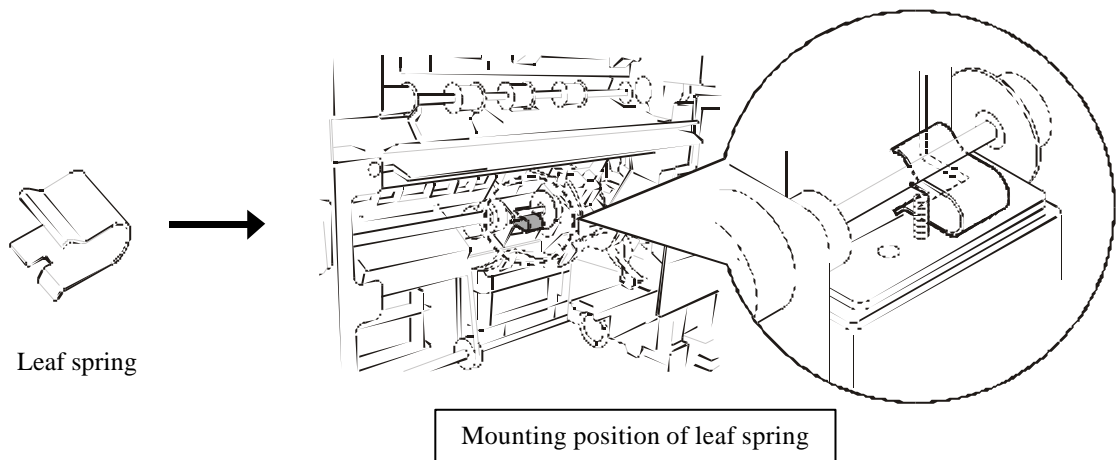
Changed to binding screws with flat washer



(Service Manual Q30)

Servicing Work:

In case the before-mentioned symptom occurs, remove the right internal cover to mount a new part called leaf spring on the stack delivery pulley shaft.



Points to Note for Servicing:

If the stack processing motor belt tension has been adjusted, be sure to return it to original status to check the performance before this measure is taken.
 (Refer to Service Information FF-T01-W-000133)

Service Parts:

No.		Description	Part number	Q'ty	Stock	Inter-change-ability	PC. ----- Stock date
1	Old					↓ ↑	Q30
	New	SPRING, LEAF	FB6-2734-000	0→1	D	↓ ↑	In stock
2	Old	SCREW, MACHINE M3X8 ① ➔	XB1-2300-809 XB6-7300-609	2→0	F	↓ ↑ No Yes	Q30
	New	SCREW, W/WASHER, M3X6 (S)	XB2-5300-609	0→2	F	↓ ↑	In stock
3	Old	BELT, PAPER FEED	FF5-9196-000	2→0	A	↓ ↑ No Yes	Q30
	New	BELT, PAPER FEED	FF5-9196-030	0→2	D	↓ ↑	In stock
4	Old	OPERATING TRAY ASSEMBLY	FG6-3971-000	1→0	A	↓ ↑ No Yes	Q30
	New	OPERATING TRAY ASSEMBLY	FG6-3971-010	0→1	D	↓ ↑	In stock

①Add
➔

Affected Machines:

- Temporary: XFY02643 and later
- ① ➔ Permanent: XFY16089 and later
- To be communicated as soon as identified*